

AI

-
- APP
-

- 2.
- 3.
- 4.
- 5.
- 6.
- 7.
- 8.
- 9.
- 10.
-

APP

```
~/stop_ros.sh
```

2.

```
ros2 launch large_models_examples llm_control_servo.launch.py
```



190°

3.

```
ros2 launch large_models_examples llm_object_sorting.launch.py
```



4.

```
ros2 launch large_models_examples llm_waste_classification.launch.py
```



5.

```
ros2 launch large_models_examples llm_3d_object_sorting.launch.py
```



6.

```
ros2 launch large_models_examples vllm_with_camera.launch.py
```



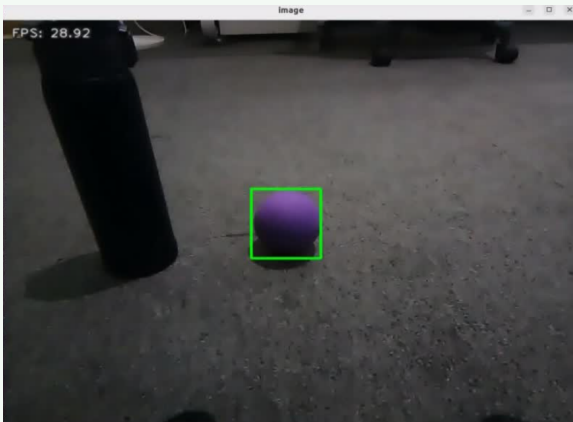
7.

```
ros2 launch large_models_examples vllm_track.launch.py
```



8.

```
ros2 launch large_models_examples vllm_object_transport.launch.py
```



9.

```
ros2 launch large_models_examples vllm_object_transport.launch.py
```



10.

```
ros2 launch large_models_examples vllm_dietitian1.launch.py
```



- AI